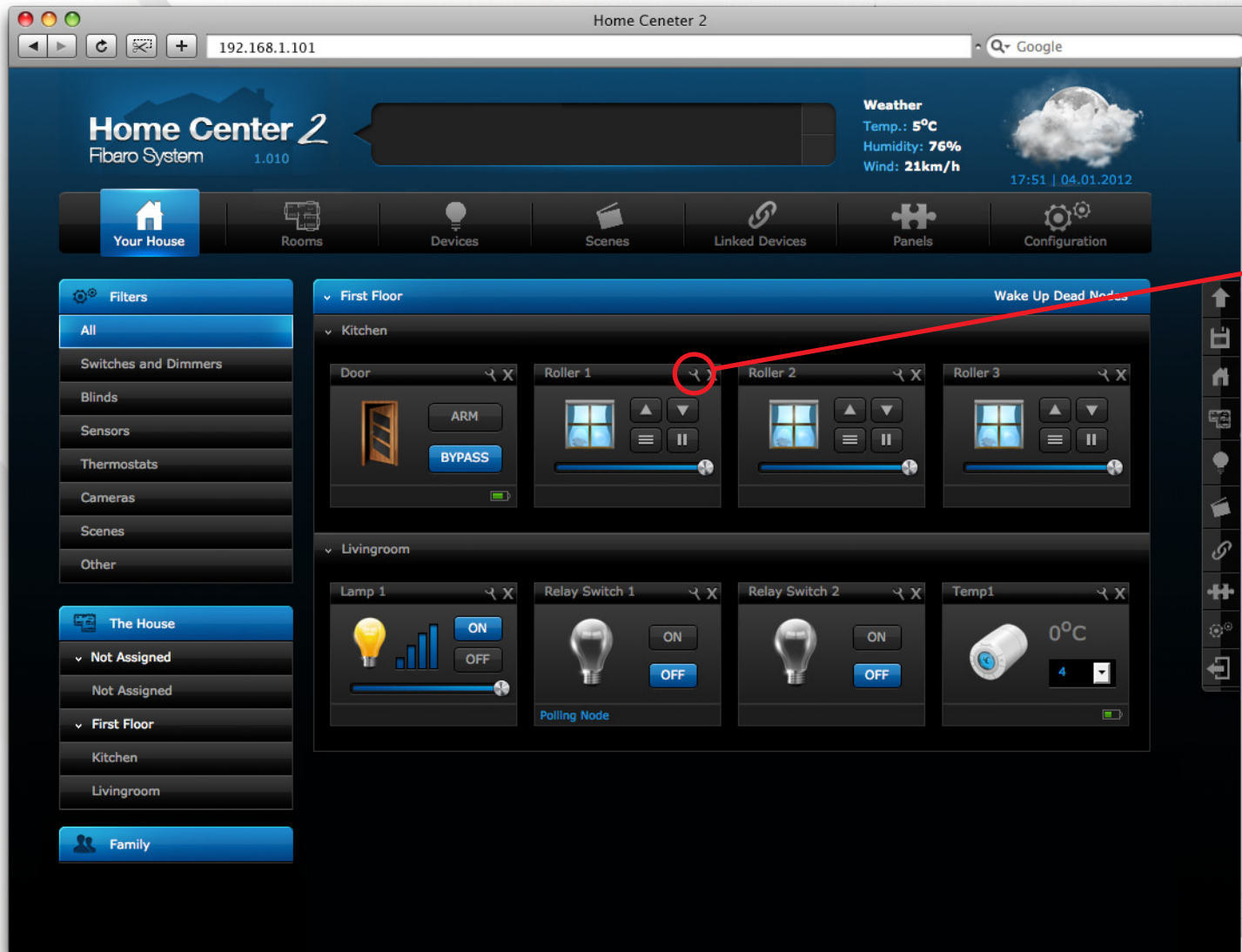




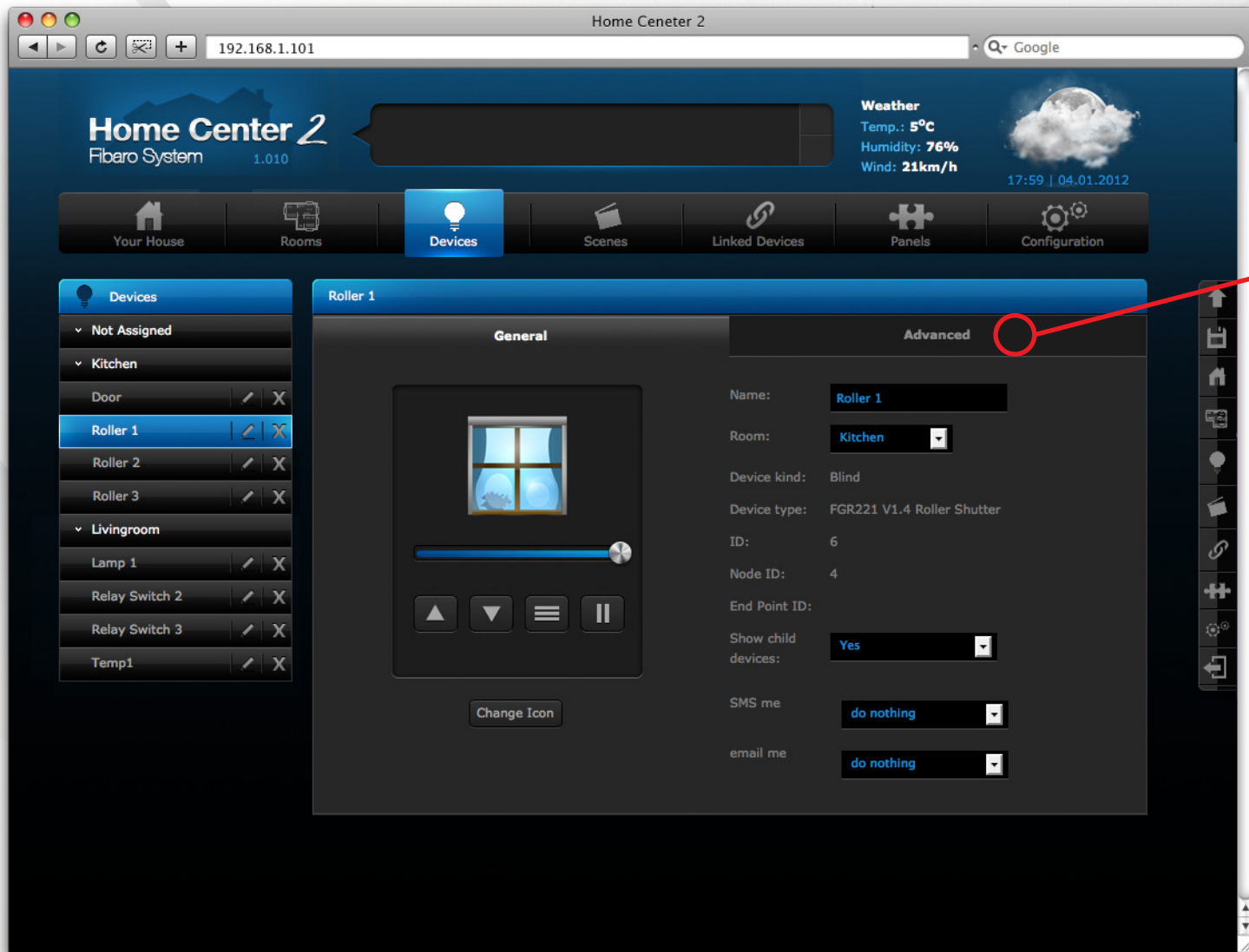
Roller Shutter association with Fibaro System

Example scene: there are 3 roller blinds in a kitchen, each with separate switch.

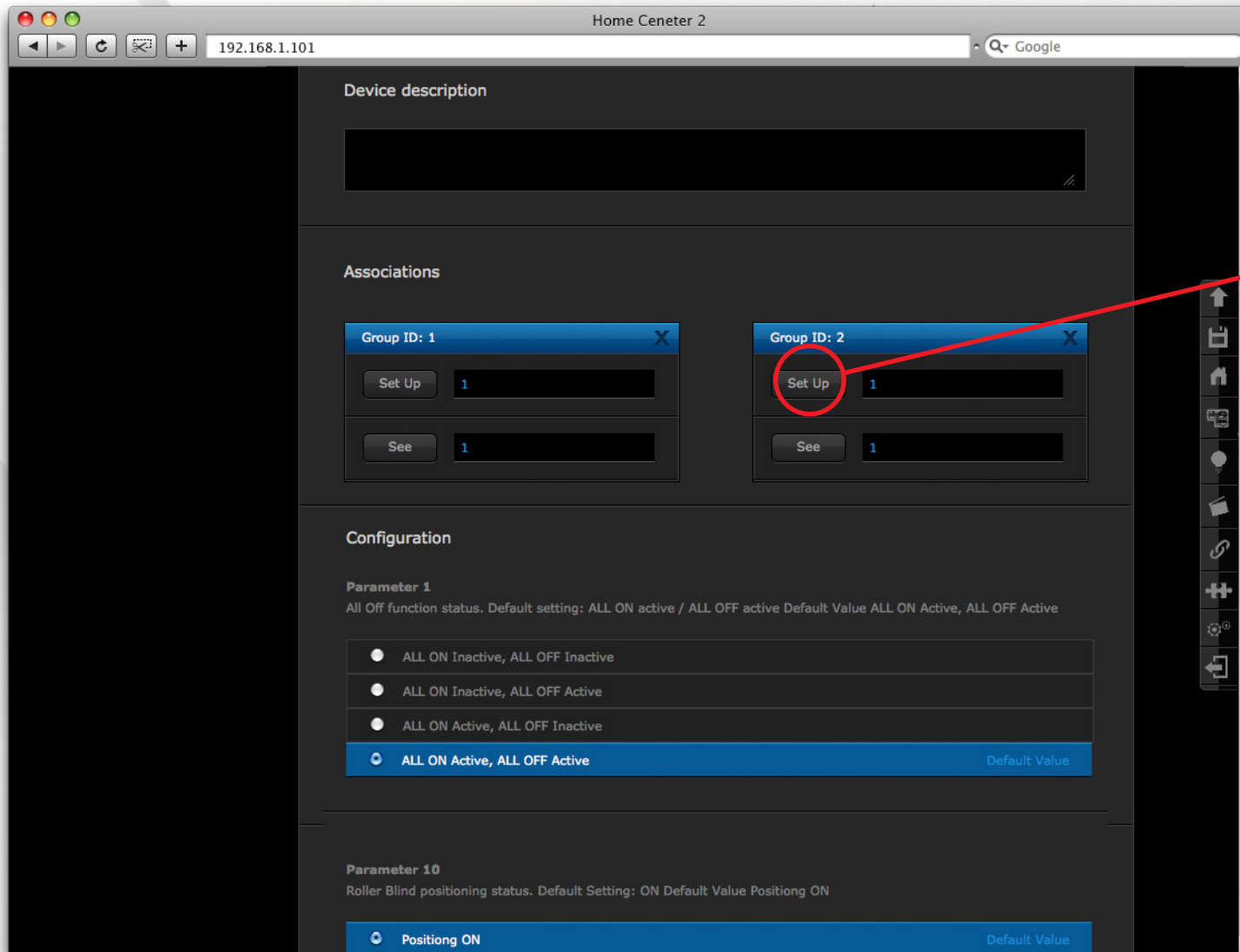
Target: associate 3 Roller Shutters so that switch hold rolls up or down 3 roller blinds at the same time.



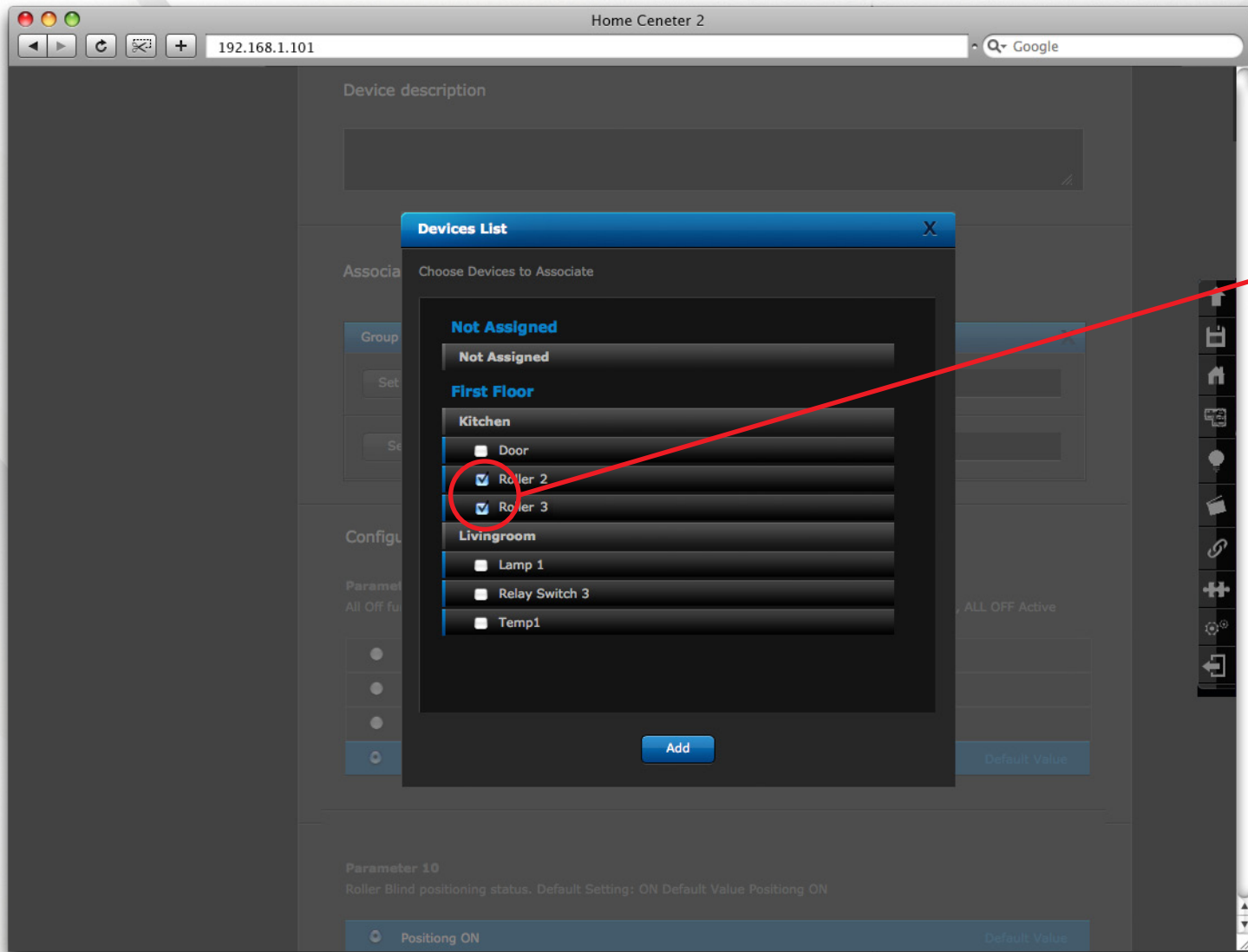
Click settings icon in roller blind which switch key other 2 blinds are to be associated with.



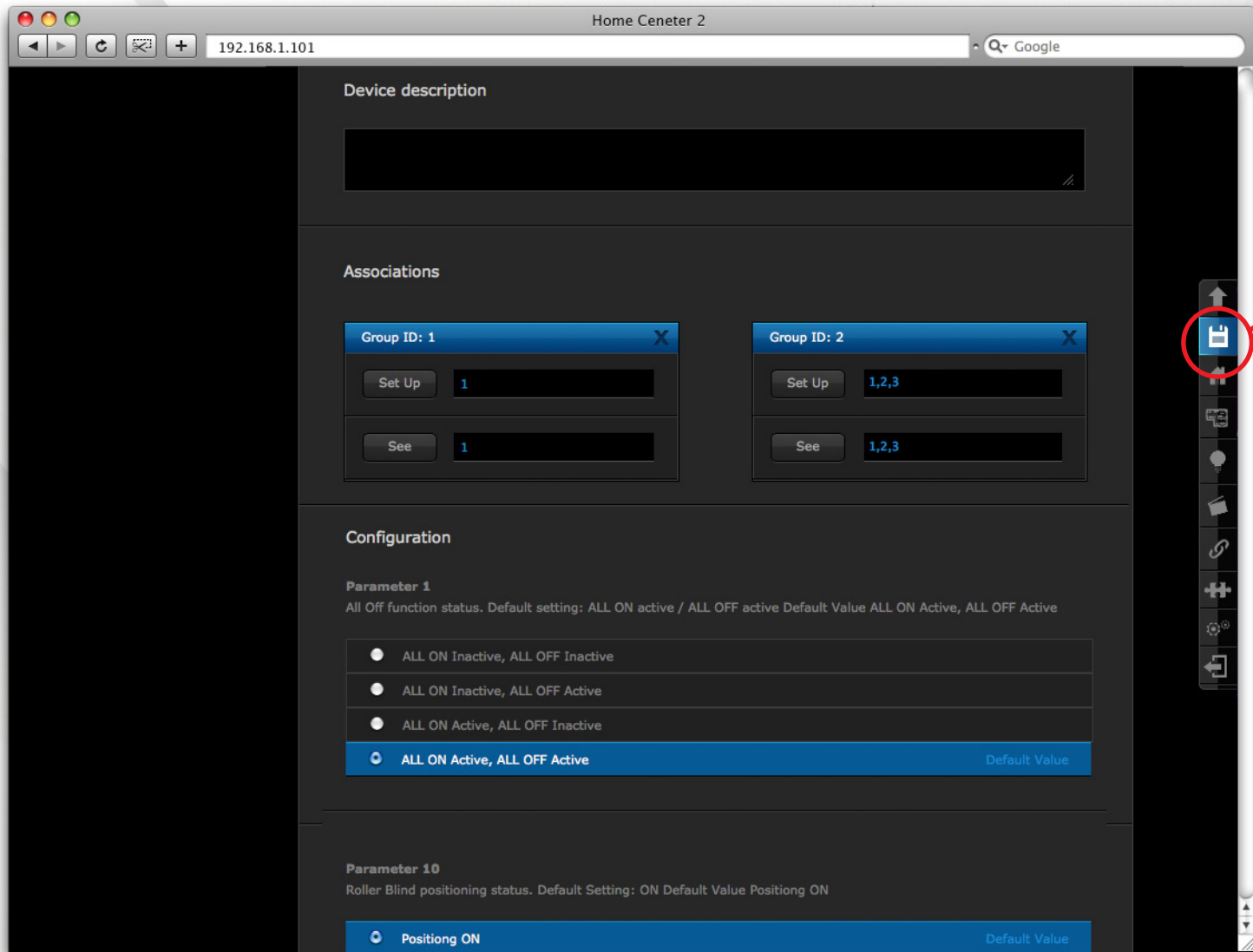
After completing previous step, Click "Advanced" settings tab



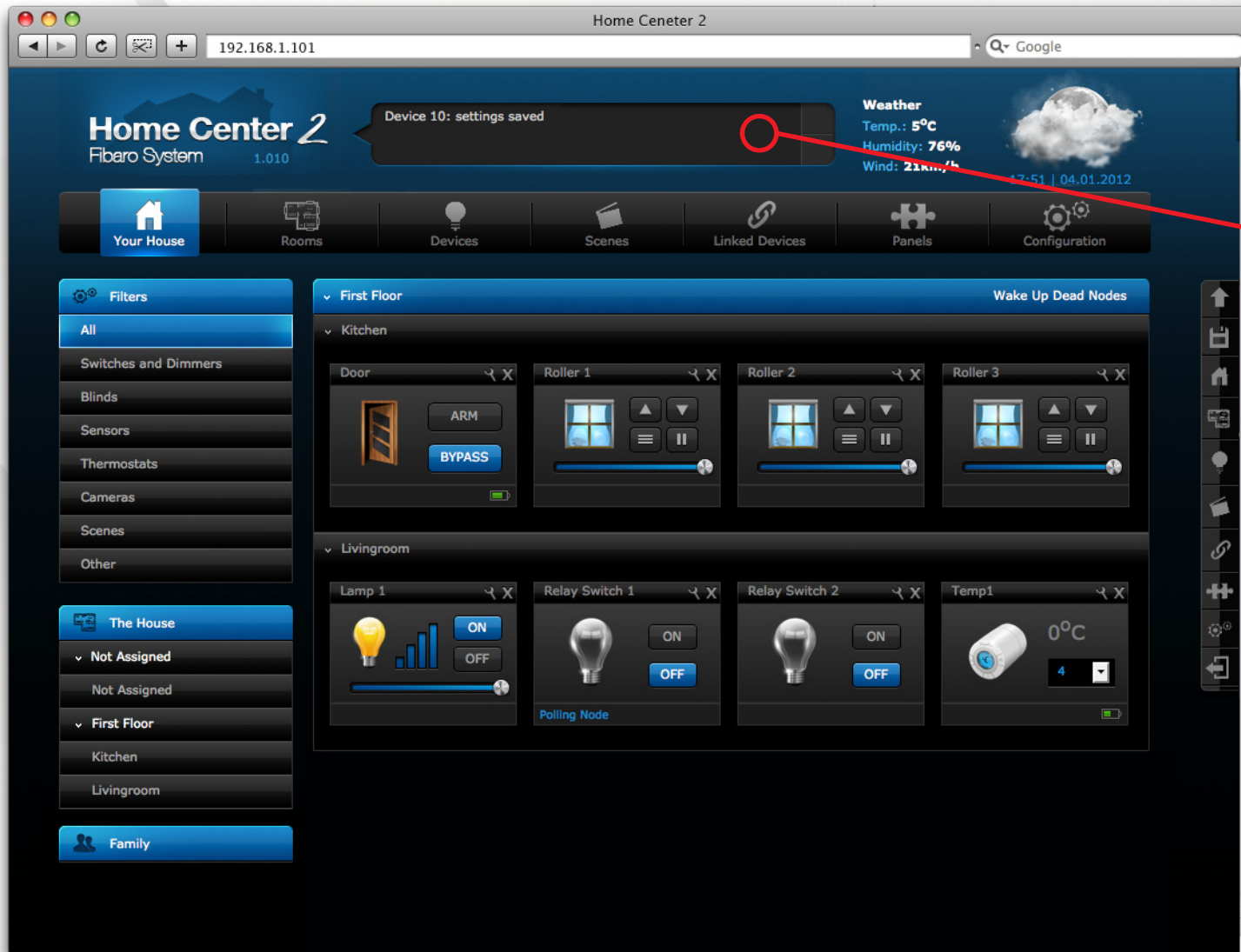
Now click "Set up" button corresponding to chosen association group. Fibaro Roller Shutter supports two, independent association groups: ID1 and ID2, triggered each time switch key is clicked (ID1) or each time switch key is held (ID2). Using ID2 association group, single click opens just one roller blind, key hold triggers association, i.e. steers all roller blinds.



Tick devices to be associated.



Click disk icon to save association.



Now Home Center processes saved data and sends commands to all associated devices. After approx. 1 second, association is ready.