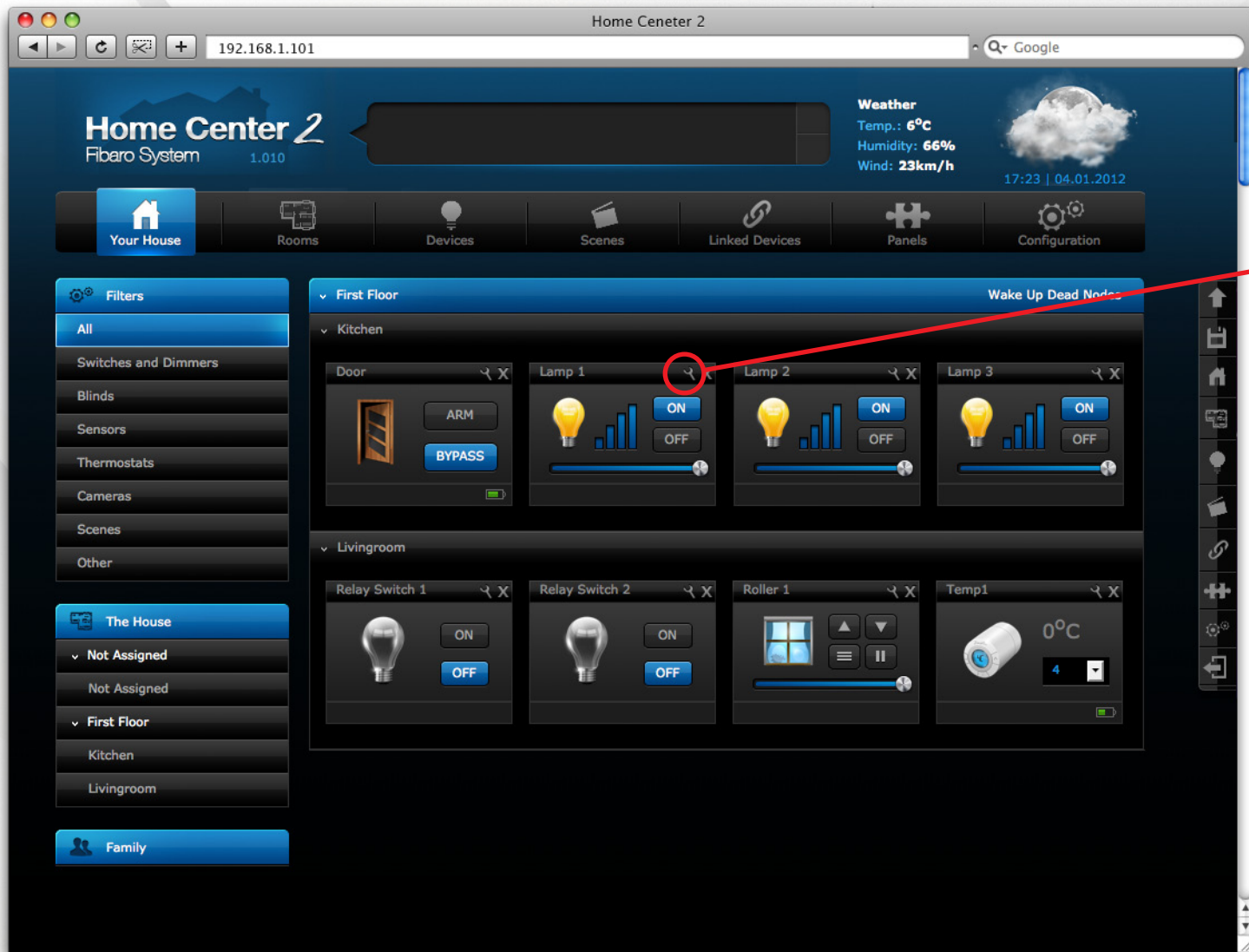




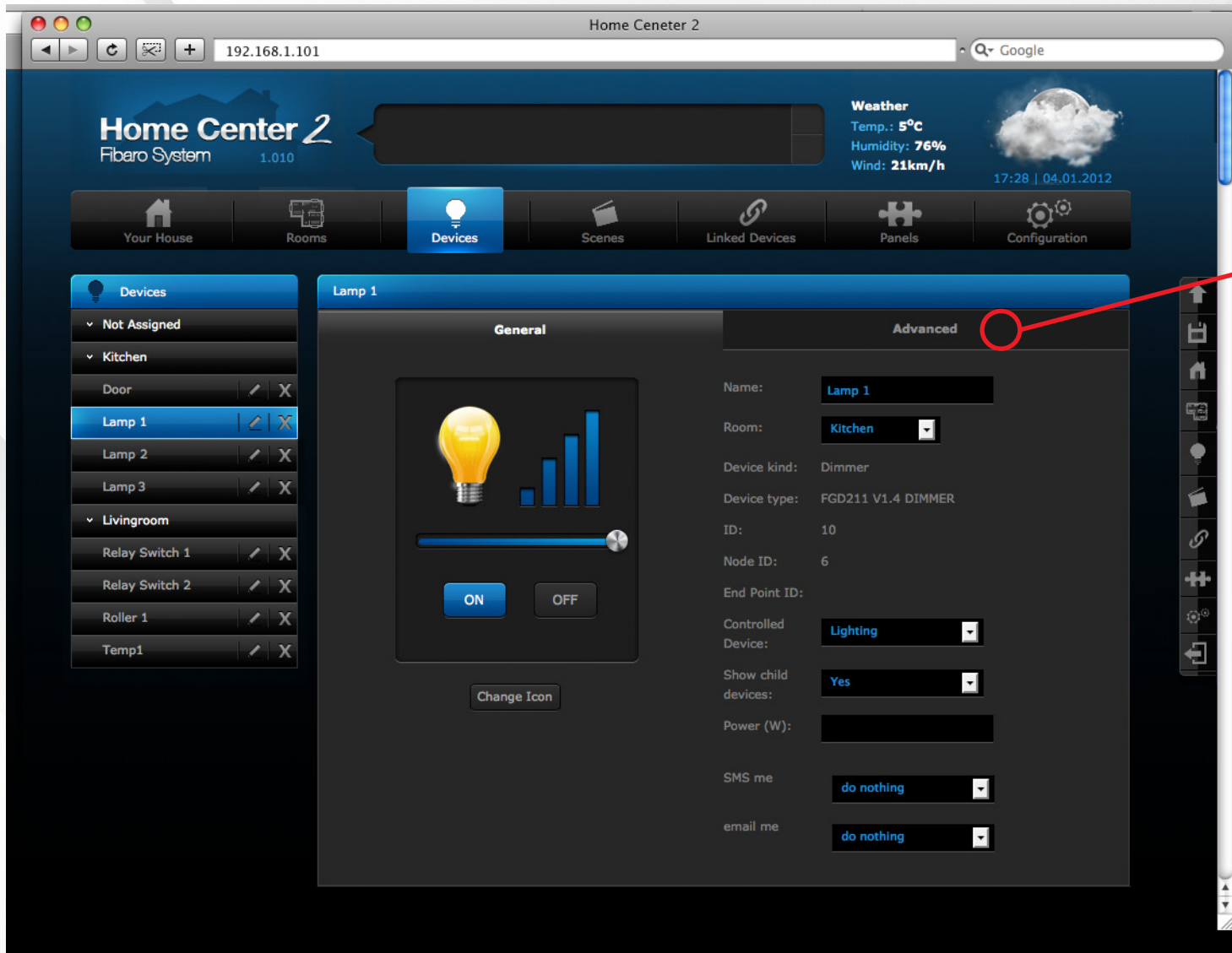
Dimmer association with Fibaro System

Example scene: there are 3 lamps in a long hallway, each with separate switch.
Target: associate 3 dimmers so that switch hold dimms all 3 lamps at the same time.

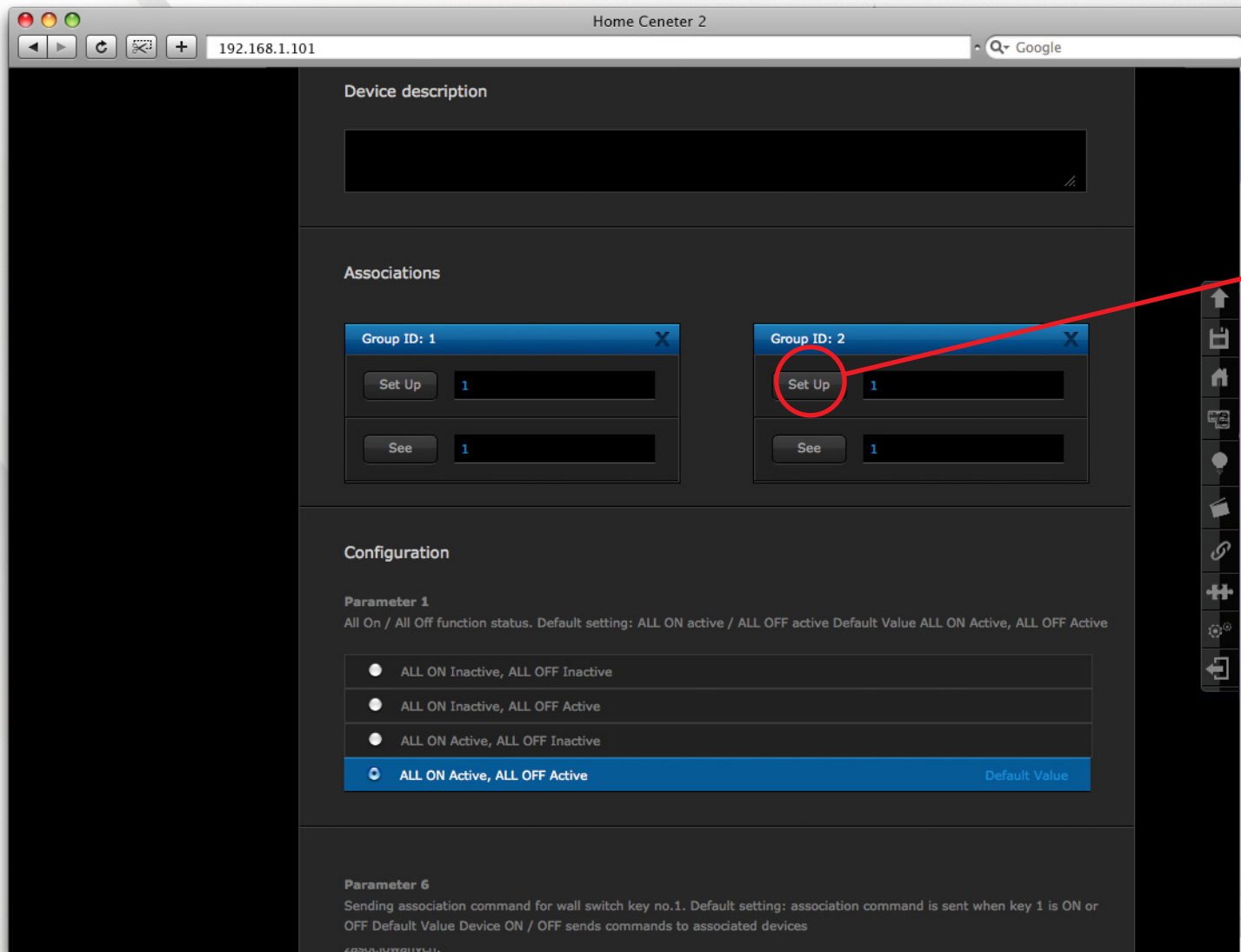
How to: make device association with Fibaro System.



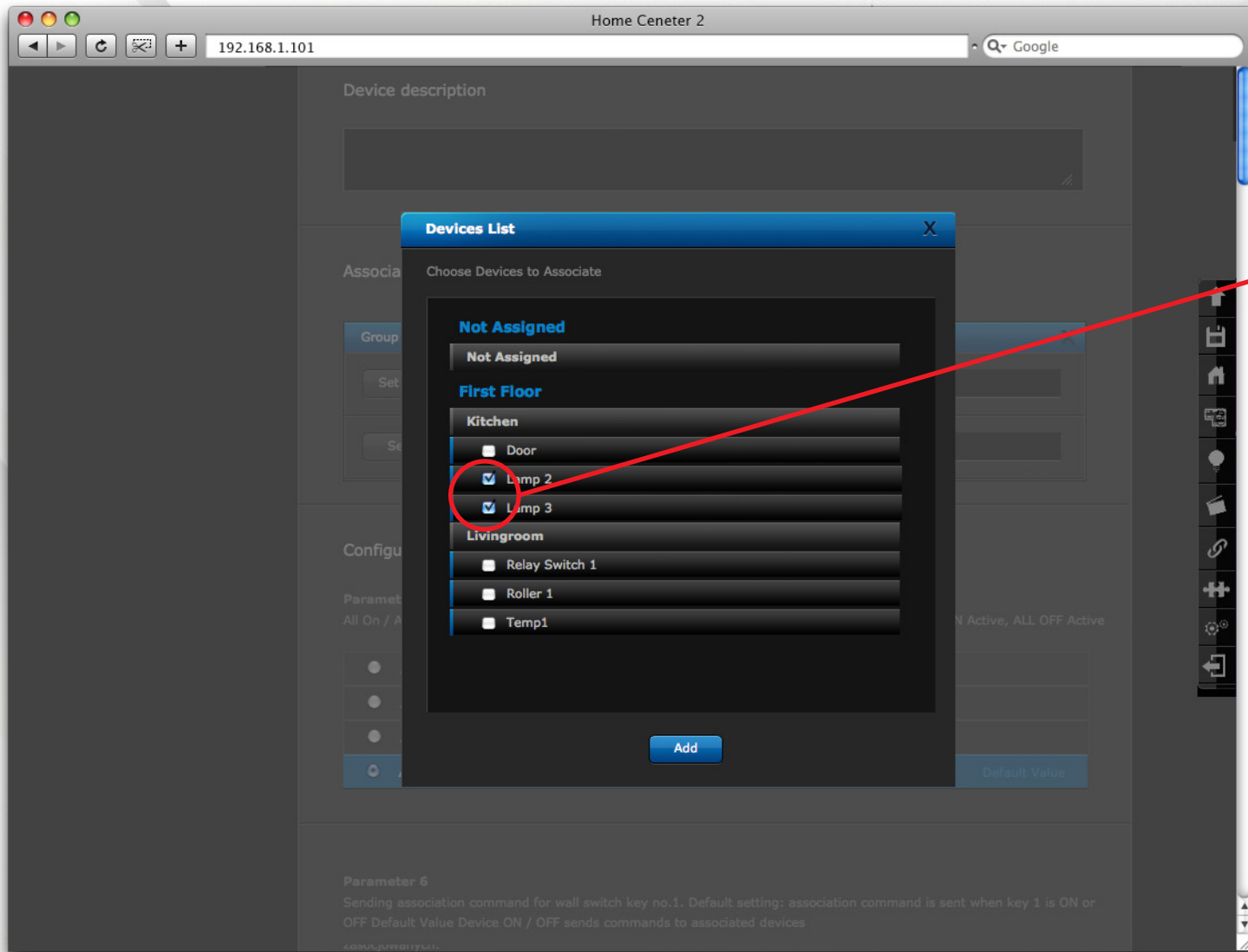
Click settings icon in the lamp which switch key other 2 lamps are to be associated with.



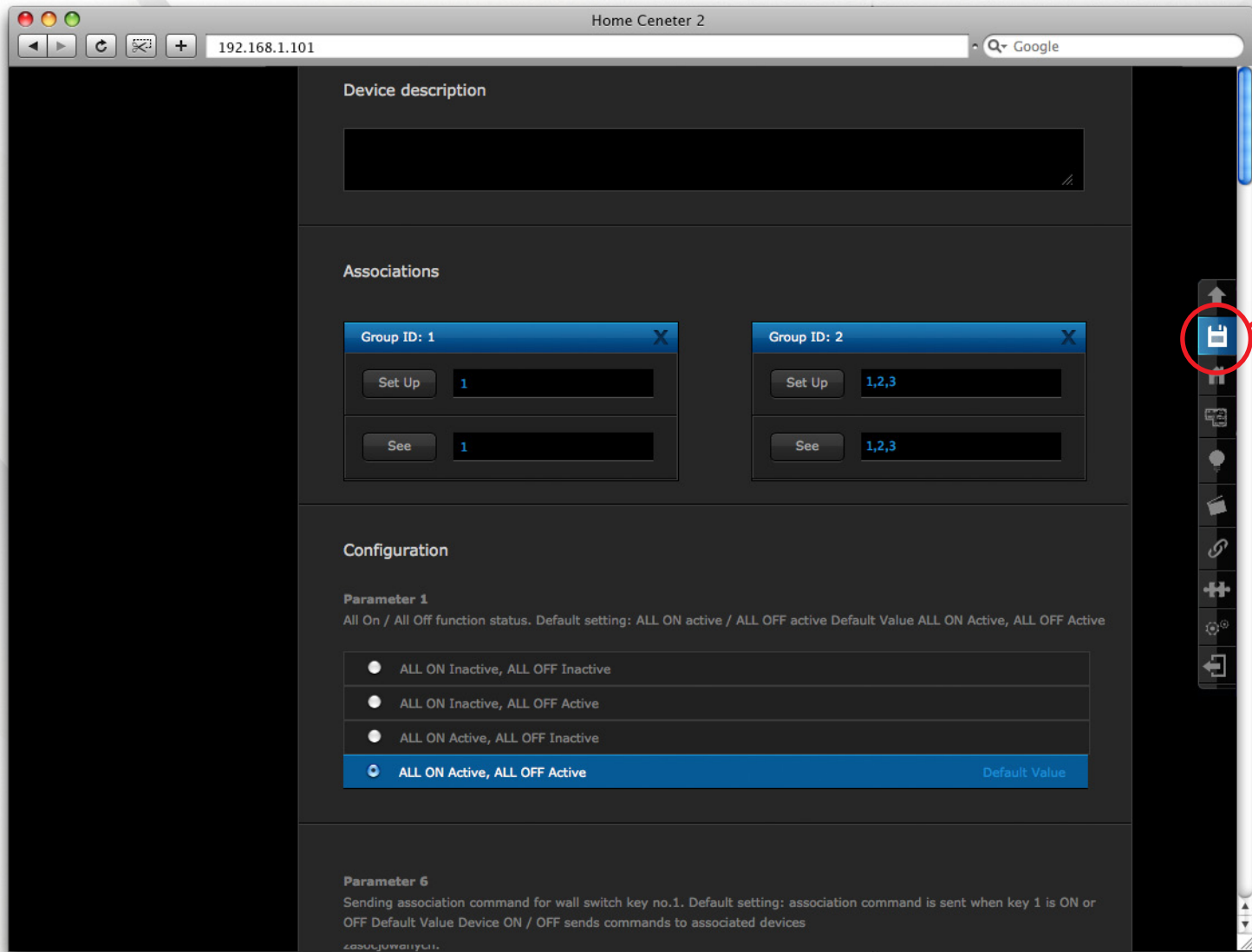
After completing previous step, Click "Advanced" settings tab



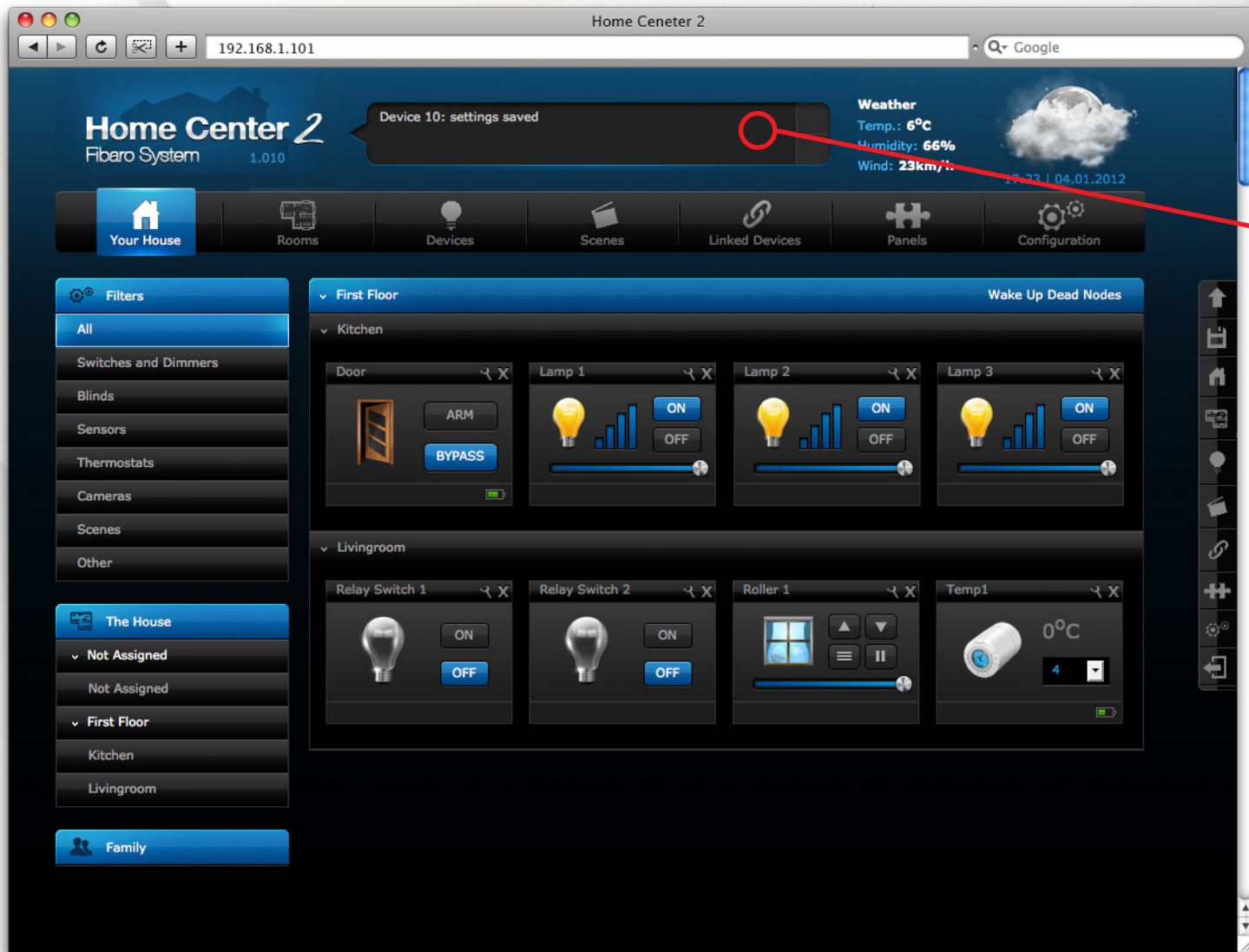
Now click "Set up" button corresponding to chosen association group. Fibaro Dimmer supports two, independent association groups: ID1 and ID2, triggered by key 1 and key 2 of the wall switch, respectively.



Tick devices to be associated.



Click disk icon to save association.



Now Home Center processes saved data and sends commands to all associated devices. After approx. 1 second, association is ready.